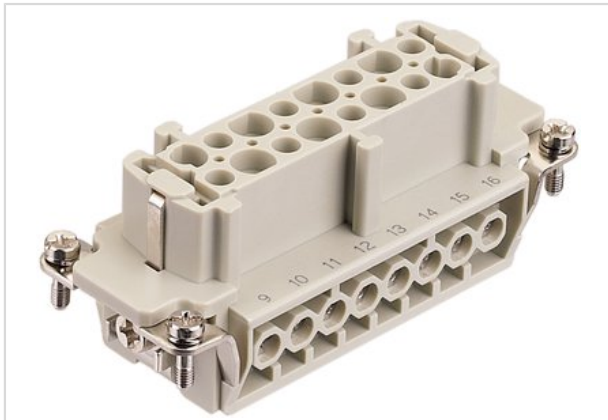


Han 16E-bu-s



Part number	09 33 016 2701
Specification	Han 16E-bu-s
HARTING eCatalogue	https://b2b.harting.com/09330162701

Identification

Category	Inserts
Series	Han E®

Version

Termination method	Screw termination
Gender	Female
Size	16 B
With wire protection	Yes
Number of contacts	16
PE contact	Yes

Technical characteristics

Conductor cross-section	0.75 ... 2.5 mm ²
Conductor cross-section	AWG 18 ... AWG 14
Electrical data acc. to IEC 61984	16 A 500 V 6 kV 3
Rated current	16 A
Rated voltage	500 V
Rated impulse voltage	6 kV
Pollution degree	3
Rated voltage acc. to UL	600 V
Rated voltage acc. to CSA	600 V
Insulation resistance	≥10 ¹⁰ Ω
Contact resistance	≤1 mΩ
Limiting temperature	-40 ... +125 °C
Stripping length	7.5 mm
Tightening torque	0.5 Nm
Mating cycles	≥500



Pushing Performance

Material properties

Material (insert)	Polycarbonate
Colour (insert)	RAL 7032 (pebble grey)
Material (contacts)	Copper alloy
Surface (contacts)	Silver plated
RoHS	compliant with exemption
RoHS exemptions	6c: Copper alloy containing up to 4 % lead by weight
ELV status	compliant with exemption
China RoHS	50
REACH Annex XVII substances	No
REACH ANNEX XIV substances	No
REACH SVHC substances	Yes
REACH SVHC substances	Lead

Specifications and approvals

Specifications	EN 60664-1 IEC 61984
Approvals	DNV GL
UL / CSA	UL 1977 ECBT2.E235076 UL 2237 PVVA2.E318390 CSA-C22.2 No. 182.3 PVVA8.E318390

Commercial data

Packaging size	1
Net weight	90.4 g
Country of origin	Germany
European customs tariff number	85366990